





Skuku USB SIM Card Phone User Manual



Content

-  **Brief Introduction**3
- Unique Feature.....3
- Specification3
- System Requirement4
-  **Functional Key**4
- 1. Shape Function Sketch.....4
- 2. Button Function.....5-6
-  **Installation**7
-  **Phone Option**7
- Addenda 1 Hardware Debugging8-10
- Addenda 2 Skuku Software Installation11
- Addenda 3 FAQ12



Brief Introduction

This device supports Skuku (SIP) internet platform , advanced DSP technology adopted ,enable it better to realize the quality voice service ,and the screen uses 128*64 dot matrix LCD ,with it the user can operate on directly without the computer screen . It is the ideal selection for voice chatting , international commercial talking and cost saved ,by its functions as Phonebook ,contacts ,incoming / outgoing review, Skuku (SIP) interface switch, volume adjustment ,redial ,etc ,in addition, its features as smart appearance ,portable size ,clear voice.

In order to use it correctly , please refer to its user manual first.

😊 Unique Feature

- 1) PnP USB interface , Skuku (SIP) supported .
- 2) Support 128 * 64 dot matrix LCD .
- 3) Peer-to-Peer , PC-to-Phone (Skuku Roaming / Skuku World) .
- 4) Echo cancellation , noise reduced ,nice voice .
- 5) Store / review / re-dial / dial the incoming / outgoing memory .
- 6) Contacts reviewed and Online prompted .
- 7) Read SIM card and store the memories .
- 8) Replace the mouse operation
- 9) Like cell phone with user-friendly interface .

😊 Specification

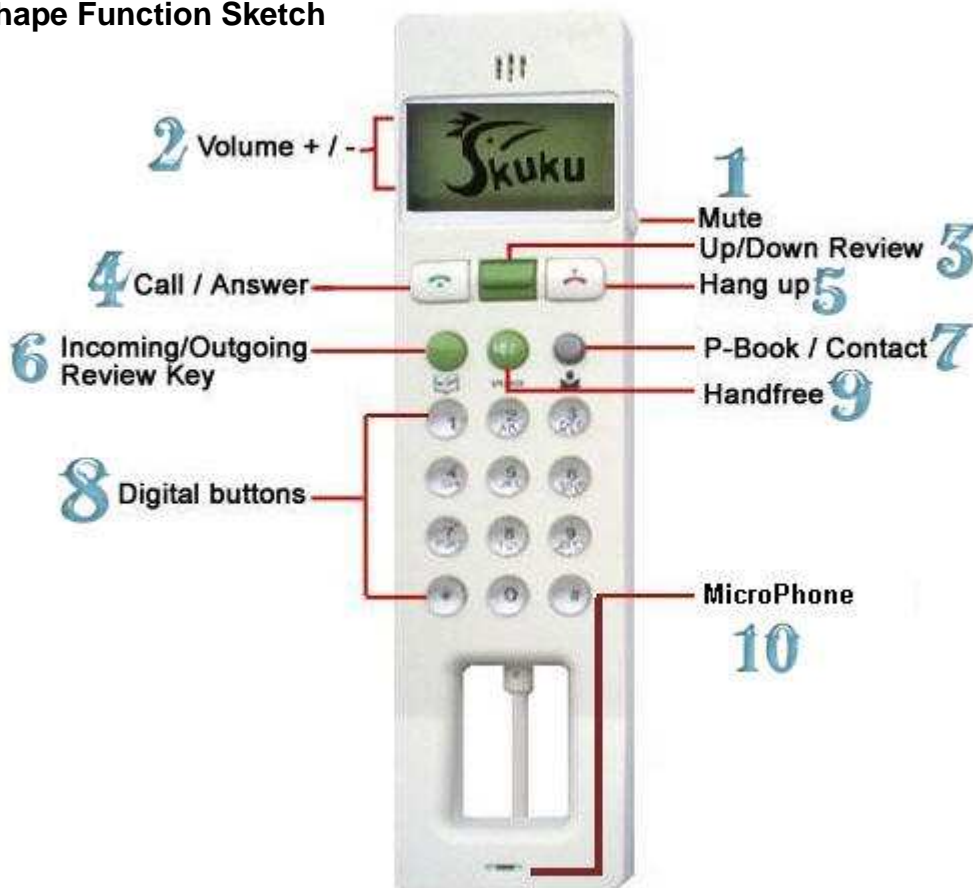
- 1) Comply with USB1.1 and USB2.0 .
- 2) Comply with USB Audio Device Class Spec 1.0 .
- 3) Comply with USB HID Version 1.1 .
- 4) Class-A USB connector .
- 5) Operation Voltage : 4V~5.25V DC
- 6) Operation Temperature : -10 ~ + 40°C
- 7) Relative Humidity : 10% ~ 95% .
- 8) Ambient Noise : ≤ 60VdB(A).
- 9) Dimension: 150mm*37mm* 20mm.
- 10) Weight: 112 g.

☺ System Requirement

- 1) Pentium MMX 300Hz or above .
- 2) 64MB memory or above .
- 3) 100MB hard disk or above .
- 4) USB port required .
- 5) Broadband or 56K modem .
- 6) Windows 2000 / XP / Vista operation system .

📖 Functional Key

1. Shape Function Sketch



2. Button Function

1) “ Mute ” Key

When talking, press this key ,the other side can not hear this side’s voice , press it again ,it will recover the talking .

2) “Volume + / - ” Key

At standby or dialing or calling, press this key will adjust the volume.

3) “Up / Down ” Key

At standby , use Up / Down key to review the Skuku interface “ Contact “ ,” History Record “ or “ Phonebook “ , press “ Call / Answer “ key to call the selected contact , press “ Hang up “ to exit .

4) “Call / Answer ” Key

At standby ,input the called number, and press this key will dial out the number .

At reviewing, press “ Up / Down “ key to review the required number ,press this key will dial out the selected number .

At incoming ringing, press this key to answer .

5) “Hang up ” Key

At standby , if the input number is wrong ,press this key will cancel the input number , long-pressing this key will cancel the all input number .

At reviewing, press this key will exit the review.

At calling, press this key ,will end the talking ,return to standby .

When incoming ringing, press this key will refuse the incoming call .

At talking, press this key will hang up the talking .

6) “ Incoming / Outgoing Review ” Key - Events

At standby , continuously press this key to review the incoming calls read or un-read ,and outgoing calls ,the LCD displays the corresponding icon , when review the read and unread incoming or outgoing calls ,press Up/Down key to refer the call record, then press “ Call / Answer “ key to call the selected one ,press “Hang up “ to exit .

7) “SIM contacts / Contact ” Key

At standby , press this key to enter the Contact page ,press “ Up/Down” key to review the contact information ,and press “Call / Answer” to call the selected contact ,press “Hang up” to exit .

At standby , press this key twice , to enter the **SIM Card Contacts** page ,press “ Up/Down “ key to review the contacts in this page ,press “Call / Answer “ to call the selected contact ,press “ Hang up “ to exit .

8) Digital Buttons

1~9 , * , 0 are digital buttons .

9) “Handfree (Speaker) ” Key

At standby, press this key to get the speaker sound , press again will cancel the speaker function .

10) “MicroPhone” socket

Installation

**Easily Download Skuku client form our website <http://www.skuku.com>
And follow the setup steps**

3. Dialing Status's

Peer-to-Peer : Skuku to Skuku ; input the speed-dial number ,or through to review “ Contact “ , “ Phone Book “ , “History Record “ and choose the called one ,press “Call / Answer “ to dial out .

PC-to-Phone : Skuku roaming only (**GSM|ON-LINE**) input the called number ,press “ Call / Answer “ key to dial out ,the operation steps as below :

A . International Call : click on change to Skuku world (**www/GSM| Skuku World**)

input 00 (or +) + Country Code + Area Code + phone number , for example , someone in other country wants to dial the number 1234567 in New York ,USA ,input “ 00 1 212 1234 869 “ , then press “ Call / Answer ” key to dial out ,it is OK .

Remark: Before using Skuku world service you have to insert the local country code.



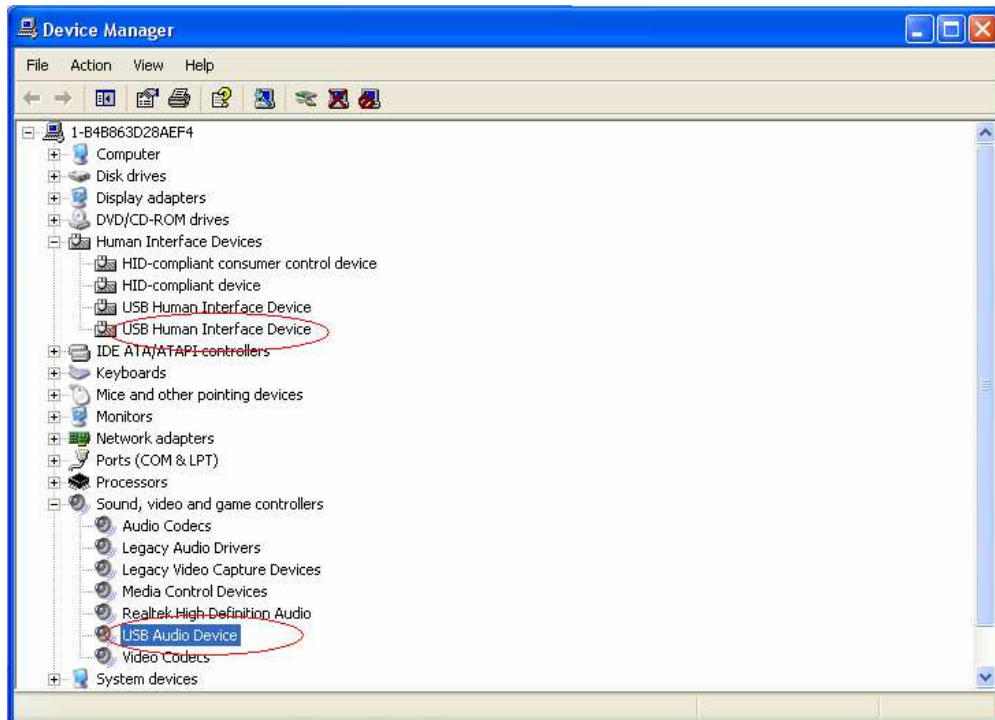
B. If the input number is wrong, and noticed as an invalid number, press “Hang up” key and input the correct number is OK.

Notice : If want to realize PC-to-Phone , have to buy the Skuku world service , please ensure your user has enough balance , for more information ,please login my account page at Official website www.skuku.com

Addenda 1. Hardware Debugging

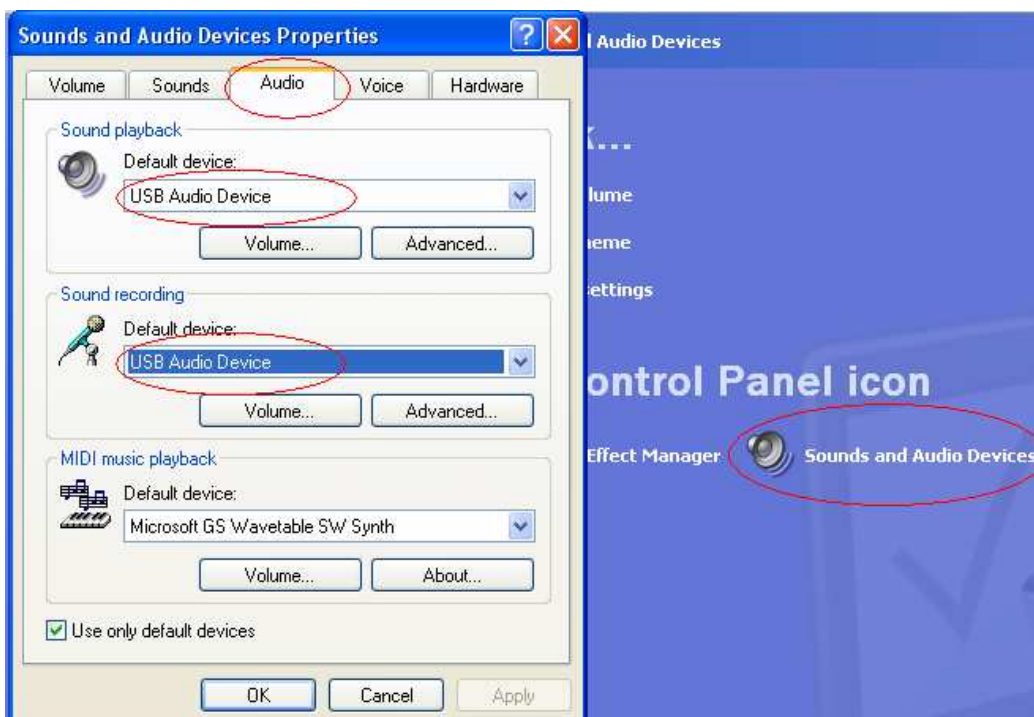
1) To check if the hardware installation successfully or not (Windows XP as an example) .

The operations as < **Start** > --> < **Setting** > --> < **Control Panel** > --> < **System** > --> < **Hardware** > --> < **Device Manager** > , if appear < USB Audio Device > ,means the installation is successful ,if appear “ ? “ or “ ! “ , it means it is failure .



2) Open “ Audio “ and “ Volume ” , the steps as below :

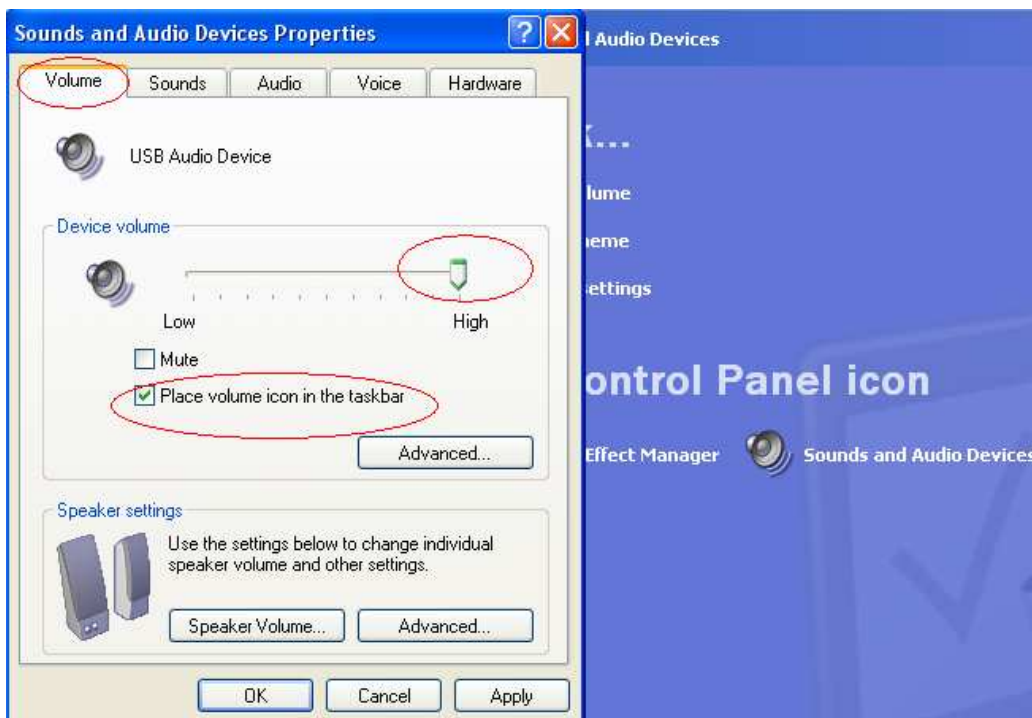
A . < **Start** > --> < **Setting** > --> < **Control Panel** > --> double-click < **Sounds and Audio Device** > --> “ **Audio** “ → Choose “ **USB Audio Device** ” in both “ **Sound playback** “ and “ **Sound recording** “ , the picture as following ,



B. Click “ Volume ” in the “ Sound recording ” , and choose the suitable volume at the right box .



C. Click “ **Volume** “ ,choose “ Place volume icon in the taskbar “ , and adjust the volume to a suitable place ,and choose < **Ok** > ,the picture as below ,

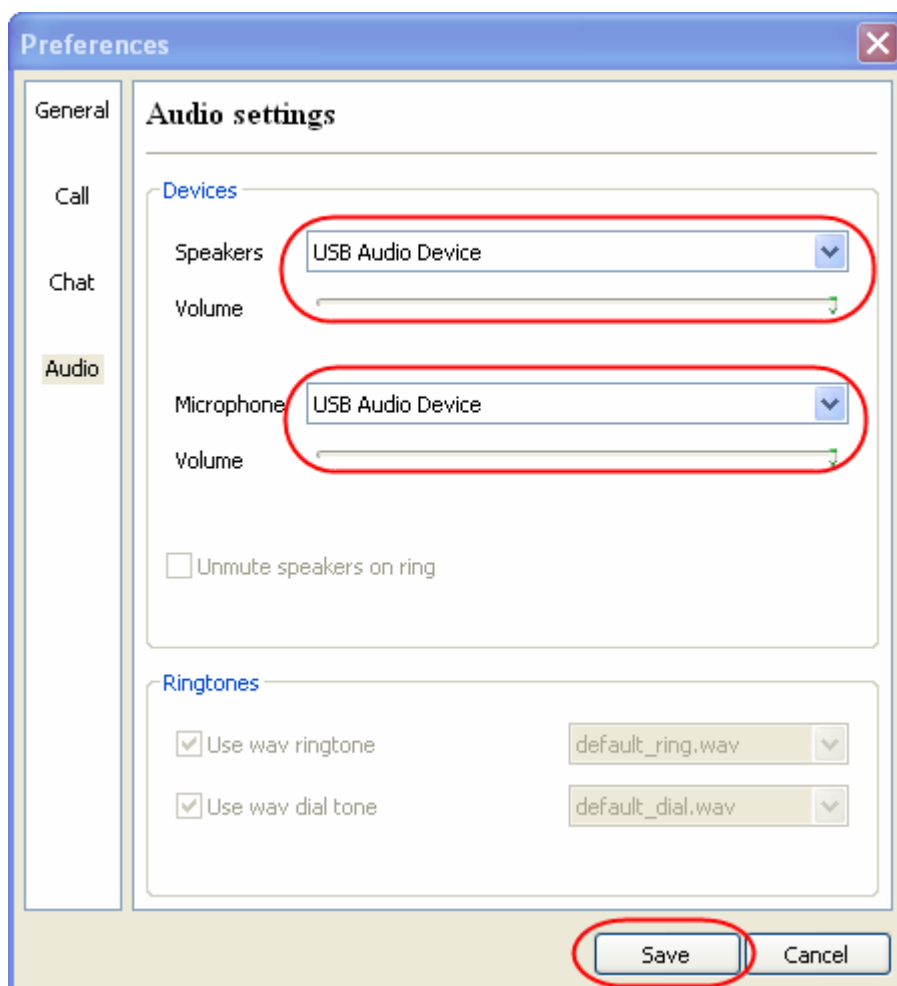


1) Making different sound and System sound.

USB phone enable to record and play sound , but System sound record and play through PC's sound card or other audio device ,the operation steps as below ,

A. Setup the system audio input/output device : < **Start** > → < **Setting** > → < **Control Panel** > → double-click < **Audio and Multimedia** >→ < **Audio** > → choose the suitable system default device in both “ Audio Play “ and “ Record “ .

B. Setup the Skuku audio input/output device , in Skuku interface , choose < menu > ---> < preferences > --> < Audio > ---> <Devices> > ,all choose “ USB Audio Device “ in “Audio In “ , “ Audio Out “ ,and “,when incoming call ,the USB phone or PC Speaker will ring.




Addenda 2. Skuku Software Installation

1) Download Skuku Software at official website www.Skuku.com Get the Skuku software

,Double-click this  icon to install it .

2) According to the prompt to proceed the next step .

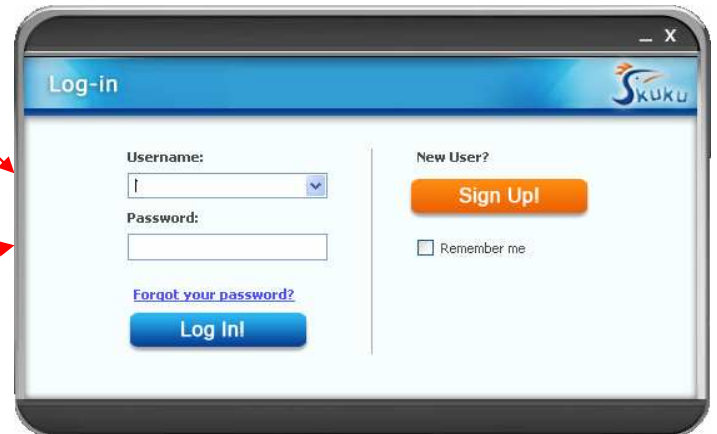
3) After installation , it will appear the icon as  in the PC desktop .

4) Double-click this icon  to set ,the steps as below ,

Step 1: Login Skuku

If you have Skuku account here ,please login it here .

Please input your Skuku password here .



Step 2 : After login it , can use Skuku at once .



Notice, After successfully to login ,it shows **WWW** or **GSM |online** status ,it is OK .

Addenda 3. FAQ

Failure	Checking	Failure Recovery
Non-sound	<ul style="list-style-type: none"> * USB jack connection right or not . * The PC's volume is closed . 	<ul style="list-style-type: none"> → Make sure right to plug USB jack with PC's . → Open the PC's volume .
Disable to dial	<ul style="list-style-type: none"> * If install the dialing software * skuku USB device connected * the socket that hold the SIM card is locked well * Are all platforms compatible 	<ul style="list-style-type: none"> → Install the dialing software → Locked the SIM card → Choose the compatible platform
Disable to do the call or login	<ul style="list-style-type: none"> * Is it right of the ID and password * Does it have enough balance or service plan at My Account tab 	<ul style="list-style-type: none"> → Reset → add balance to Skuku account → chose your prefer plan
Dead or dysfunction	<ul style="list-style-type: none"> → Long-pressing “ Hang up / Exit “ key to try again . → Un-plug USB jack and re-plug it, and reboot the computer . 	